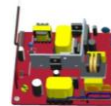


UNIFIVE

Safety , Efficient & Earth friendly

LED Driver 30W Series

UOLI330 Series



Product Highlights:



- ✓ Stability
- ✓ Wireless dimmer
- ✓ Energy efficiency
- ✓ Available at Japan,China, Taiwan, USA, Europe,UK
- ✓ non-insulated
- ✓ Constant current for LED lighting product
- ✓ PF>0.88
- ✓ Into the current< 5A

Protection:

- ✓ Short circuit protection
- ✓ Over Voltage Protection

Safety Approvals:

- ✓ CE(Low Voltage Directive)
- ✓ IEC/EN61347

Emissions:

- ✓ EN 55015 : 2006+A1:2007

Immunity:

- ✓ Electrostatic discharge: 61000-4-2
- ✓ Radiated electromagnetic fields:61000-4-3
- ✓ Fast transients (Burst): 61000-4-4
- ✓ Surge transients: 61000-4-5
- ✓ Conducted disturbance: 61000-4-6
- ✓ Voltage dips, interruptions & Variations:61000-4-11

Electrical Spec:

Input					
Description	Min	Typ	Max	Units	Comment
Voltage	90V	242V	267	VAC	
Frequency	47	50/60	63	Hz	

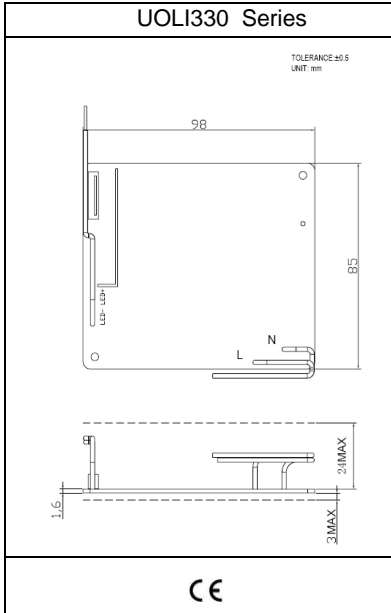
Environmental					
Description	Min	Typ	Max	Units	Comment
Operating Temperature	0	-	50	°C	Free Convection,Sea level
Non-Operating Temperture	-20	-	65	°C	Free Convection,Sea level
Operating Humidity	5	Absolute Maximum Rating	95	%RH	No Condensing
Non-Operating Humidity	5	-	95	%RH	No Condensing

Typical model list:

LED Driver 30W Series

Input Condition		DC Output Voltage	DC Output Current	C.C	The dimming rate	efficiency	Power consumption		WM light elimination (MAX)	Option/Remark
				Voltage Range			There is no WM	Have a WM (WM0.5W)		
Input Voltage: 90V-267Vac Frequency: 47-63Hz	1	35.3V	0.55A	35.3V~53.7V	5~100%	86%	28.9W	29.4W	0.7W	
	2	45.2V	0.55A							
	3	50V	0.55A							
	4	53.7V	0.55A							
	5	-	-	-	-	-	-	-	-	-

Mechanical Spec:



Dimming : add a D after the output voltage and current

Wireless dimming : add a W after output voltage and current

Packing Spec:

Type	Pcspcr Carton	Gross Weight (kg)	Net Weight(kg)	Size(mm)	CBM(m2)	Container	Ctn/Container	Pcs/Container	Gross Weingt (Ton)	Remark
UOLI330	60	8.7	7.2	406×250×298	1×1.2	20	800	48000	7200	With Gift Box