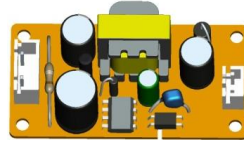




Safety , Efficient & Earth friendly

Open Frame Switching Power Supply 6W Series

UOF Series



Product Highlights:

- ✓ Stability
- ✓ Ultra small size
- ✓ Energy efficiency

Protection:

- ✓ Short circuit protection
- ✓ Over Voltage Protection
- ✓ Over Current Protection

Safety Approvals:

- ✓ CE (Low Voltage Directive)
- ✓ UL1310

Emissions:

- ✓ CE CISPR 22 Class B

Immunity:

- ✓ EN55024/A1:2001
- ✓ Electrostatic discharge: 61000-4-2
- ✓ Radiated electromagnetic fields:61000-4-3
- ✓ Fast transients (Burst): 61000-4-4
- ✓ Surge transients: 61000-4-5
- ✓ Conducted disturbance: 61000-4-6
- ✓ Voltage dips, interruptions & Variations:61000-4-11

Electrical Spec:

Absolute Maximum Rating

Input					
Description	Min	Typ	Max	Units	Comment
Voltage	90	120/240	264	VAC	2 Wire No Protection Ground
Frequency	47	50/60	63	Hz	

Environmental					
Description	Min	Typ	Max	Units	Comment
Operating Temperature	0	-	40	°C	Free Convection,Sea level
Non-Operating Temperture	-20	-	85	°C	Free Convection,Sea level
Operating Humidity	10	-	90	%RH	No Condensing
Non-Operating Humidity	10	-	90	%RH	No Condensing

Typical model list:

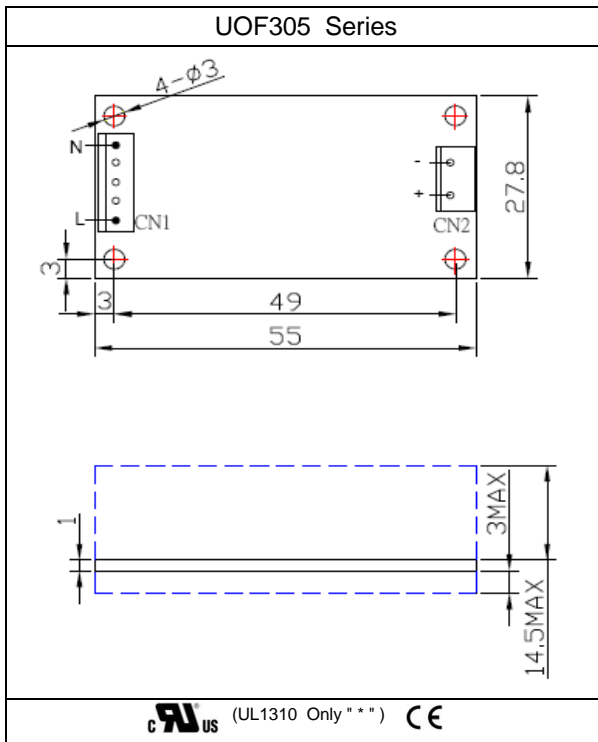
Open Frame Switching Power Supply 6W Series

Input Condition	DC Output Voltage	DC Output Current	Output Voltage Precision	Ripple & Noises	Regulation		Option/Remark
					Line	Load	
1	3.3V	1.5A	±5%	50mV	±1%	±5%	
2	3.3V	1.6A	±5%	50mV	±1%	±5%	
3	3.3V	2.0A	±5%	50mV	±1%	±5%	
4	3.6V	1.8A	±5%	50mV	±1%	±5%	
5	4.2V	0.7A	±5%	50mV	±1%	±5%	
6	5V	0.5A	±5%	200mV	±1%	±5%	
7	5.6V	0.5A	±5%	50mV	±1%	±5%	
8	5V	1.0A	±5%	50mV	±1%	±5%	
9	6V	0.5A	±5%	60mV	±1%	±5%	
10	6V	1.0A	±5%	60mV	±1%	±5%	
11	7.5V	0.8A	±5%	70mV	±1%	±5%	
12	8.5V	0.5A	±5%	80mV	±1%	±5%	
13	9V	0.5A	±5%	90mV	±1%	±5%	
14	9.6V	0.2A	±5%	90mV	±1%	±5%	
15	12V	0.5A	±5%	120mV	±1%	±3%	
16	15V	0.4A	±5%	150mV	±1%	±3%	
17	18V	0.3A	±5%	180mV	±1%	±2%	
18*	24V	0.2A	±5%	240mV	±1%	±2%	
19	-	-	-	-	-	-	-

Measurement condition

1. Measurements shall be made with an oscilloscope with 20MHz bandwidth.
2. Outputs shall be bypassed at the connector with a 0.1uF ceramic disk capacitor and a 10uF electrolytic capacitor to simulate system loading.

Mechanical Spec:



Packing Spec:

Type	Pcsper Carton	Gross Weight (kg)	Net Weingt(kg)	Size(mm)	CBM(m2)	Container	Ctn/Contai ner	Pcs/Conta iner	Gross Weingt (Ton)	Remark
UOF305	180	5.1	3.6	406x250x298	1x1.2	20	800	144000	4320	Bulk package