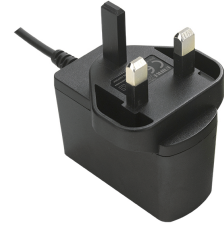


UM Series

Medical Use AC/DC Adaptor 6W Series **Wall Mount**



▲ **UM305**



▲ **UMK305**



▲ **UME305**



▲ **UMB305**



■ Please contact our sales department for safety standard of each model.



Product Highlights

- Stability
- Compact size
- Energy efficiency
- Suit medical equipment, health device

Protection

- Short circuit protection
- Over Voltage Protection
- Over Current Protection

Safety Approvals

- UL60950
- CAN/CSA C22.2 NO. 60950
- IEC/EN 60601-1
- PSE

Efficiency

- Meet Coc V Tier2

Emissions

- VCCI Class B
- CE CISPR 32 Class B

Immunity

- EN55011

Electrical Spec Absolute Maximum Rating

Input					
Description	Min	Typ	Max	Units	Comment
Voltage	90	100~240	264	VAC	
Frequency	47	50/60	63	Hz	

Environmental					
Description	Min	Typ	Max	Units	Comment
Operating Temperature	0	-	40	°C	Free Convection,Sea level
Storage Temperature	-20	-	65	°C	Free Convection,Sea level
Operating Humidity	5	-	95	%RH	No Condensing
Storage Humidity	5	-	95	%RH	No Condensing

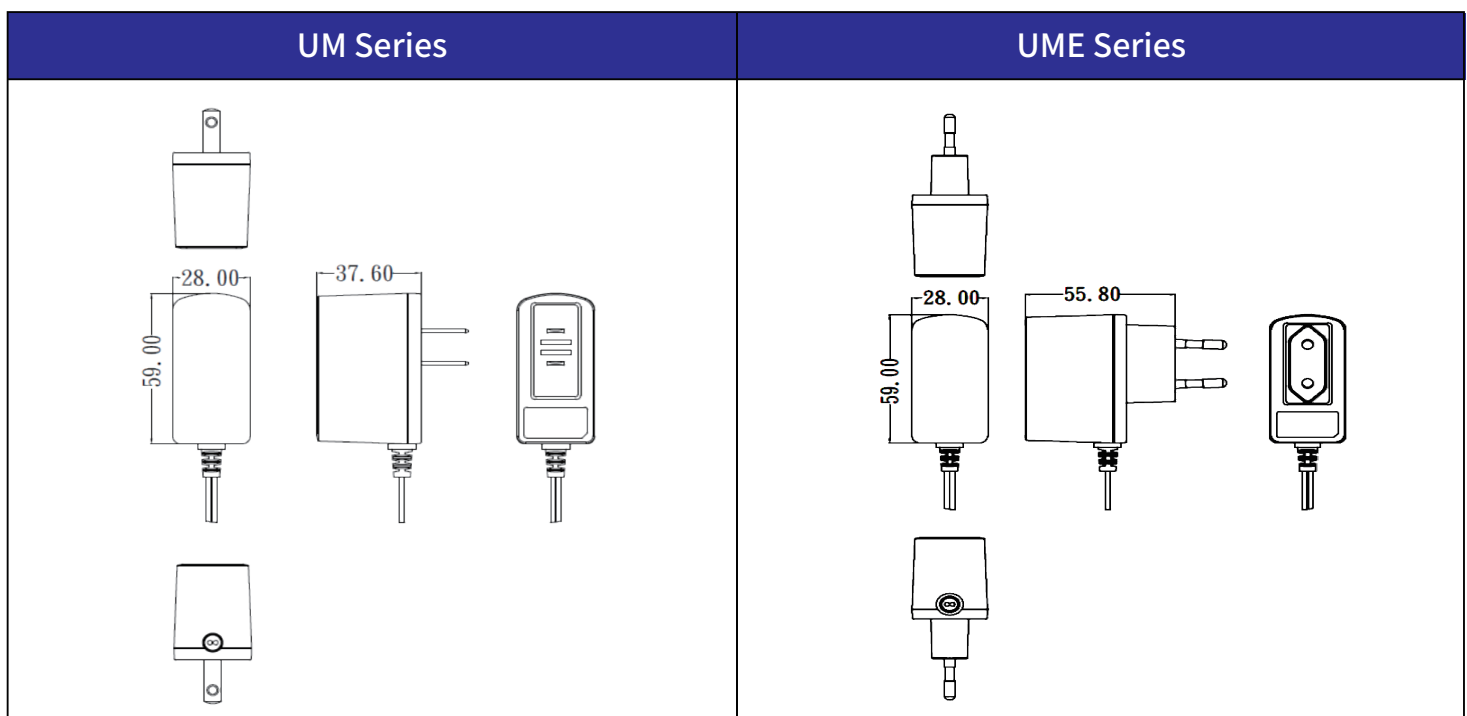
Typical model list

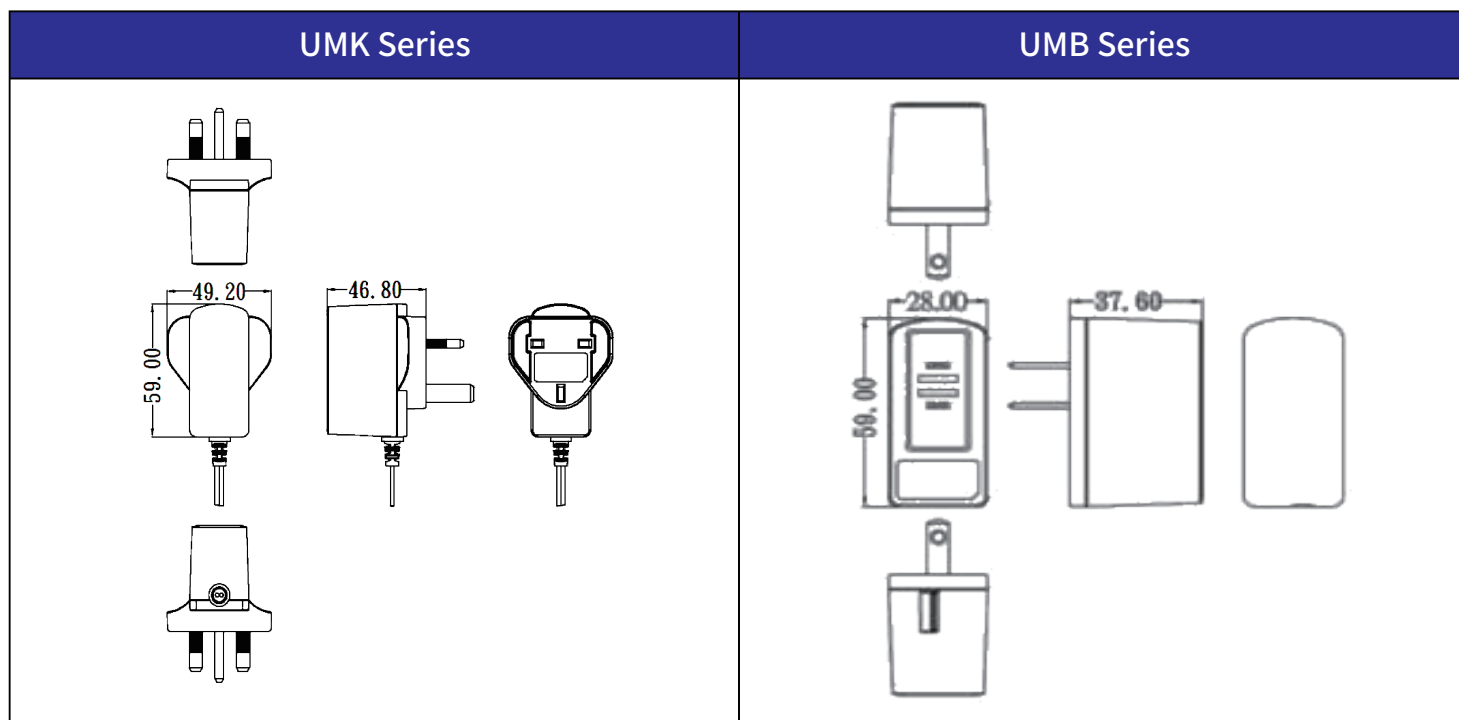
Input Condition	DC Output Voltage	DC Output Current	Output Voltage Precision	Ripple	Noises	Regulation		Option/Remark	
						Line	Load		
Input Voltage: 90V-264Vac Frequency: 47-63Hz	1	5V	1.0A	±5%	100mV	100mV	2%	10%	
	2	6V	0.5A	±5%	100mV	100mV	2%	10%	
	-	-	-	-	-	-	-	-	

■ Measurement condition

1. Measurements shall be made with an oscilloscope with 20MHz bandwidth.
2. Outputs shall be bypassed at the connector with a 0.1uF ceramic disk capacitor and a 10uF electrolytic capacitor to simulate system loading.

Mechanical Spec





• ————— the following blank ————— •

■ Please contact our sales department for details of each model ■